

JBL SOUNDFLY™ BT

Plug-in wireless speaker

QUICK SETUP GUIDE

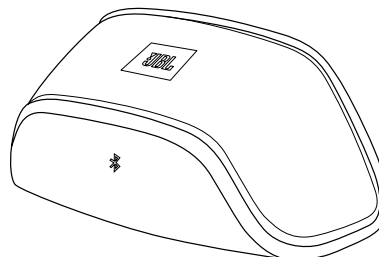


WELCOME

Thank you for purchasing the JBL Soundfly™ BT plug-in wireless speaker. Soundfly BT will fill your room with sound from your portable *Bluetooth*-enabled device while plugging directly into an AC outlet and remaining practically invisible.

INCLUDED ITEMS

JBL Soundfly BT
Unit



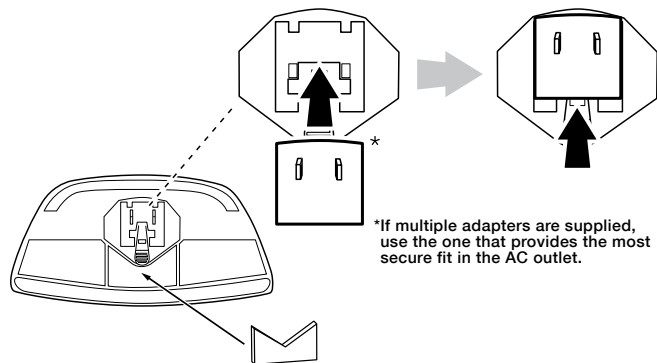
AC Plug Adapter
(varies with region)



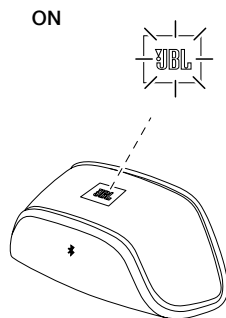
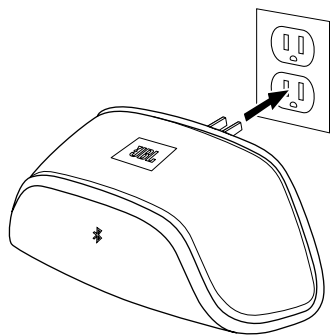
Support Pad
(varies with region)



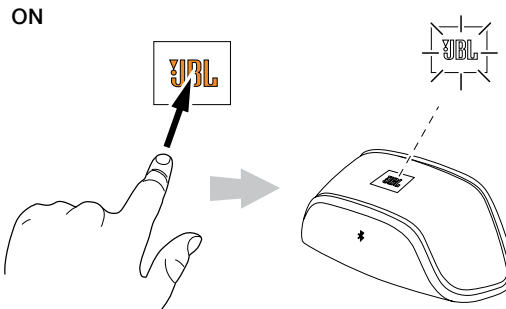
PLUG SOUNDFLY BT INTO AN AC OUTLET



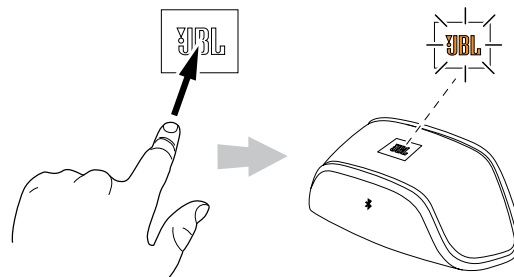
*If multiple adapters are supplied, use the one that provides the most secure fit in the AC outlet.



TURNING SOUNDFLY BT ON AND OFF

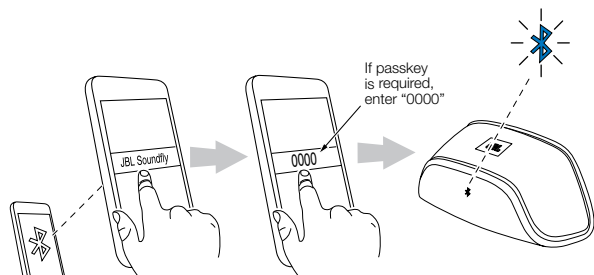
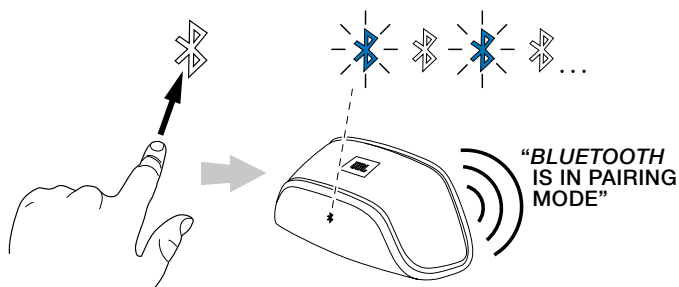


STANDBY



Note: Soundfly BT will automatically enter the Standby mode after 10 minutes of inactivity.

PAIR SOUNDFLY BT WITH YOUR *BLUETOOTH* DEVICE



NOTE: *Bluetooth* pairing between two devices does not have to be repeated after a successful initial pairing unless you remove Soundfly BT from the paired device's *Bluetooth* device list. To un-pair Soundfly BT from the current device, press and hold the Bluetooth logo button.

STREAM YOUR AUDIO ON SOUNDFLY BT

Soundfly BT will automatically turn from Standby to On when it receives a streaming audio signal from a *Bluetooth*-capable device. Use your *Bluetooth*-enabled device to control the volume and other playback functions. The maximum streaming range is approximately 33 feet (10m) from the Soundfly BT unit.

JBL EASY CONNECT APPLICATION

The JBL Easy Connect application is downloadable free from the Android® Market at market.android.com. The JBL Easy Connect Application features:

- Controls for Soundfly BT's digital sound processing (DSP) that enables you to get the best sound wherever you plug in Soundfly BT.
- A music player with a music browser function.
- One touch *Bluetooth* operation.

UPGRADING FIRMWARE

Your Soundfly BT has upgradeable firmware that lets you take advantage of new features and improvements as they become available. Go to www.jbl.com for information about checking your unit's firmware version and instructions on upgrading to a newer firmware version.

TROUBLESHOOTING

SYMPTOM	POSSIBLE PROBLEM	SOLUTION	NOTE
No sound (Power button LED is not illuminated)	Faulty AC connection	Make sure that Soundfly BT is plugged into a working AC outlet.	The Power button LED glows white or amber when the unit is receiving AC power.
No sound (Power button LED glows amber.)	Soundfly BT is in Standby mode.	Touch the Power button.	The Power button LED glows white when the unit is on.
	The <i>Bluetooth</i> -enabled device is out of range of Soundfly BT	Move the device closer to Soundfly BT.	Soundfly BT's operational range is approximately 33 feet (10m).
No sound (Power button LED glows white.)	Soundfly BT is not paired with a <i>Bluetooth</i> -enabled device.	Pair Soundfly BT with a <i>Bluetooth</i> -enabled device. See Pair Soundfly BT with Your <i>Bluetooth</i> Device, on page 3.	The Pairing LED illuminates solid blue when Soundfly BT is paired with a <i>Bluetooth</i> -enabled device.
Sound crackles, hisses or is distorted	The <i>Bluetooth</i> -enabled device is overloading Soundfly BT.	<ul style="list-style-type: none"> • Turn down the volume on the <i>Bluetooth</i>-enabled device. • Set the EQ on the device to "Off". 	
Loud hum or buzzing	There is a ground loop with the AC wiring.	<ul style="list-style-type: none"> • Unplug Soundfly BT and plug it into a different AC outlet. 	
The <i>Bluetooth</i> -enabled device does not pair with Soundfly BT	Soundfly BT is not in pairing mode.	Touch the Pairing button on Soundfly BT.	The Pairing LED flashes blue when Soundfly BT is in the pairing mode.
	<i>Bluetooth</i> -enabled device's battery is low.	Recharge the device's battery following the instructions in its user manual.	
	The device is not compatible with Soundfly BT.	Verify compatibility with the device's manufacturer.	

SPECIFICATIONS

Amplifier power:	10 watts x 2
Frequency response:	60Hz – 20kHz
Signal-to-noise ratio:	80dB
Power requirement:	100V – 240V AC, 50Hz/60Hz
Power consumption:	<0.5W (standby); 30W (maximum)
Dimensions (W x H x D):	7-1/2" x 2-13/16" x 3-5/8" (71mm x 92mm x 190mm)
Weight:	0.9 lb (0.42kg)

IMPORTANT SAFETY INSTRUCTIONS

1. Read these instructions.
2. Keep these instructions.
3. Heed all warnings.
4. Follow all instructions.
5. Do not use this apparatus near water.
6. Clean only with dry cloth.
7. Do not block any ventilation openings. Install in accordance with the manufacturer's instructions.
8. Do not install near any heat sources such as radiators, heat registers, stoves, or other apparatus (including amplifiers) that produce heat.
9. Do not defeat the safety purpose of the polarized or grounding-type plug. A polarized plug has two blades with one wider than the other. A grounding-type plug has two blades and a third grounding prong. The wide blade or third prong is provided for your safety. If the provided plug does not fit into your outlet, consult an electrician for replacement of the obsolete outlet.
10. Protect the power cord from being walked on or pinched, particularly at the plugs, convenience receptacles and the point where they exit from the apparatus.
11. Only use attachments/accessories specified by the manufacturer.
12. Use only with the cart, stand, tripod, bracket or table specified by the manufacturer or sold with the apparatus. When a cart is used, use caution when moving the cart/apparatus combination to avoid injury from tip-over.
13. Unplug this apparatus during lightning storms or when unused for long periods of time.
14. Refer all servicing to qualified service personnel. Servicing is required when the apparatus has been damaged in any way, such as: when the power supply cord or plug has become damaged, when liquid has been spilled or objects have fallen into the apparatus, when the apparatus has been exposed to rain or moisture, when the apparatus does not operate normally, or the apparatus has been dropped.
15. Do not expose this apparatus to dripping or splashing and ensure that no objects filled with liquids, such as vases, are placed on the apparatus.
16. To completely disconnect this apparatus from the AC mains, disconnect the power supply cord plug from the AC receptacle.
17. The mains plug of the power supply cord shall remain readily operable.
18. Do not expose batteries to excessive heat such as sunshine, fire or the like.



 <p>THE LIGHTNING FLASH WITH AN ARROWHEAD SYMBOL, WITHIN AN EQUILATERAL TRIANGLE, IS INTENDED TO ALERT THE USER TO THE PRESENCE OF UNINSULATED "DANGEROUS VOLTAGE" WITHIN THE PRODUCT'S ENCLOSURE THAT MAY BE OF SUFFICIENT MAGNITUDE TO CONSTITUTE A RISK OF ELECTRIC SHOCK TO PERSONS.</p>	<p style="text-align: center;">CAUTION</p> <p style="text-align: center;">RISK OF ELECTRIC SHOCK DO NOT OPEN</p> <hr/> <p style="text-align: center;">WARNING: TO REDUCE THE RISK OF FIRE OR ELECTRIC SHOCK, DO NOT EXPOSE THIS APPARATUS TO RAIN OR MOISTURE.</p>	 <p>THE EXCLAMATION POINT WITHIN AN EQUILATERAL TRIANGLE IS INTENDED TO ALERT THE USER TO THE PRESENCE OF IMPORTANT OPERATING AND MAINTENANCE SERVICING INSTRUCTIONS IN THE LITERATURE ACCOMPANYING THE PRODUCT.</p>
---	---	---

FCC AND IC REGULATIONS (USA AND CANADA ONLY)

FCC AND IC INFORMATION FOR USERS

This device complies with Part 15 of the FCC rules and Industry Canada license-exempt RSS 210. Operation is subject to the following two conditions: (1) This device may not cause harmful interference; and (2) this device must accept any interference received, including interference that may cause undesired operation.

RADIO AND TELEVISION INTERFERENCE]

This equipment has been tested and found to comply with the limits for a Class B digital device, pursuant to Part 15 of the FCC rules. These limits are designed to provide reasonable protection against harmful interference in a residential installation. This equipment generates, uses and can radiate radio frequency energy and, if not installed and used in accordance with the instructions, may cause harmful interference to radio communications. However, there is no guarantee that interference will not occur in a particular installation. If this equipment does cause interference to radio or television reception, which can be determined by turning the equipment off and then on, the user is encouraged to try to correct the interference by one or more of the following measures:

- Increase the separation between the equipment and the receiver.
- Connect the equipment to a different outlet so that the equipment and receiver are on different branch circuits.
- Consult the dealer or an experienced radio/ TV technician for help.

NOTE: Changes or modifications not expressly approved by HARMAN could void the user's authority to operate the equipment.

IC STATEMENT AND WARNING (CANADA ONLY)

This Class B digital apparatus complies with Canadian ICES-003. Cet appareil numérique de la classe B est conforme à la norme NMB-003 du Canada.

Hereby, HARMAN International Industries, Incorporated declares that this JBL SOUNDFLY BT is in compliance with the essential requirements and other relevant provisions of Directive 1999/5/EC, ErP 2009/125/EC Directive and RoHS 2011/65/EU Directive. The declaration of conformity may be consulted at the support section of our Web site, accessible from www.jbl.com.



HARMAN HARMAN International Industries, Incorporated
8500 Balboa Boulevard, Northridge, CA 91329 USA

© 2012 HARMAN International Industries, Incorporated. All rights reserved.

JBL is a trademark of HARMAN International Industries, Incorporated, registered in the United States and/or other countries. Soundfly is a trademark of HARMAN International Industries, Incorporated.

Android is a trademark of Google Inc. Use of this trademark is subject to Google Permissions.

The Bluetooth word mark and logo are registered trademarks and are owned by the Bluetooth SIG, Inc., and any use of such marks by HARMAN International Industries, Incorporated, is under license.

Features, specifications and appearance are subject to change without notice.

Part No. JBLP3271 Rev.: A