

ALPHA STUDIO™



LAMBDA STUDIO™



TABLE OF CONTENTS

MINIMUM COMPUTER REQUIREMENTS 1

- Windows® 1
- Macintosh® 1

WINDOWS® INSTALLATION 2

- A. Downloading & Installing The Lexicon USB Driver 2
- B. Downloading, Installing, & Activating Cubase® LE 2
- C. Downloading & Installing The Lexicon MPX-i Plug-In 2
- D. Configuring Windows Audio Settings 3
- E. Using Cubase LE With The Alpha/Lambda 4

MAC® INSTALLATION 10

- A. Connecting to the Lexicon Alpha/Lambda 10
- B. Downloading, Installing, & Activating Cubase® LE 10
- C. Downloading & Installing The Lexicon MPX-i Plug-In 10
- D. Configuring Mac Audio Settings (Optional) 11
- E. Using Cubase LE With The Alpha/Lambda 11

This guide contains the information needed to install the required USB driver, Lexicon MPX-i reverb plug-in, and Steinberg®'s Cubase® LE recording software for use with your Lexicon Alpha or Lambda Studio™ hardware. Please follow these instructions carefully and in the documented order to ensure smooth installation of each of the software components.

MINIMUM COMPUTER REQUIREMENTS

WINDOWS®

- Intel or AMD Dual Core
- 4 GB RAM
- 6 GB free HD space
- Windows® 7, 8.x, 10 (32 and 64-bit)
- Display resolution of 1366 x 768 pixels
- Graphics card with DirectX 10 and WDDM 1.1 support
- Internet access required for software downloads and Cubase LE license activation

MACINTOSH®

- Intel Dual Core
- 4 GB RAM
- 6 GB free HD space
- OS X Version 10.8.5 or higher
- Display resolution of 1366 x 768 pixels
- Internet access required for software downloads and Cubase LE license activation

NOTE: The requirements listed above are for the Lexicon Alpha/Lambda hardware only. For the latest Cubase LE computer requirements, visit https://www.steinberg.net/en/products/cubase/specs_downloads.html. If using another recording software program, consult the software manufacturer's website for computer requirement details for that software.

WINDOWS® INSTALLATION

A. DOWNLOADING & INSTALLING THE LEXICON USB DRIVER

The Windows USB driver must be installed to use your Lexicon audio interface with your Windows computer.

To install the Windows USB driver:

1. Connect the Alpha/Lambda to your computer's **USB** port.
2. Download the Windows USB driver for your Lexicon audio interface from <http://lexiconpro.com/en-US/software>.
3. Once the download is complete, close any running software programs.
4. Launch the **Lexicon Driver Installer** and follow the on-screen instructions. Once installation is complete, restart the computer if prompted by Windows and wait for the computer to reboot.
5. The **USB** LED should now light solid blue on the Alpha/Lambda, indicating a USB connection has been established with the computer.

B. DOWNLOADING, INSTALLING, & ACTIVATING CUBASE® LE

1. Go to https://www.steinberg.net/en/mysteinberg/my_products.html and create or log into your MySteinberg account.
2. Go to the **Enter Download Access Code** area and enter the Cubase LE download code provided with the Alpha/Lambda to register and download Cubase LE. You will receive an activation code after registering that will be used to activate Cubase LE on your computer. Copy the activation code.
3. Once the download is complete, unzip the file to your hard drive then close any running software programs.
4. Go into the downloaded folder and launch the **Start Center** application. Follow the on-screen instructions to install Cubase LE. Once complete, restart the computer if prompted.
5. With the Lexicon audio interface still connected to the computer, launch Cubase LE. A prompt will appear asking you to activate the software. Click the **Activation** button then paste the activation code copied from step 2 to activate the software.

C. DOWNLOADING & INSTALLING THE LEXICON MPX-I PLUG-IN

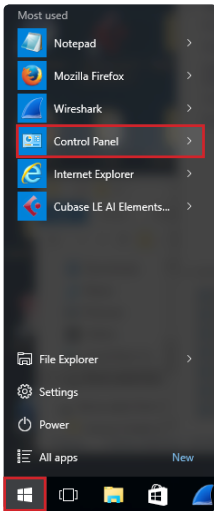
1. To download the Lexicon MPX-i reverb plug-in, follow the instructions provided on the license card included with the Alpha/Lambda.
2. Once the download is complete, close any running software programs.
3. Launch the Lexicon MPX-i reverb installer and follow the on-screen instructions. When prompted, enter the license code provided with the Alpha/Lambda.
4. Once complete, restart the computer if prompted and wait for the computer to reboot.
5. The Lexicon MPX-i reverb plug-in is now installed and available for use.

D. CONFIGURING WINDOWS AUDIO SETTINGS

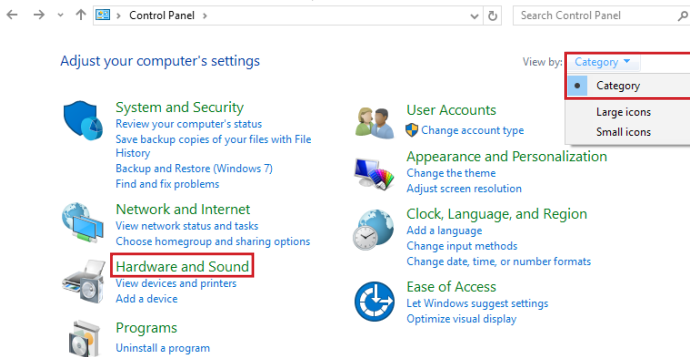
When the Lexicon USB audio driver was installed, Windows may have automatically configured it as your default audio outputs. This can potentially cause a problem where audio cannot be heard when played back from your recording software; it can also cause Window's system alerts to play loudly out of your speakers and headphones. To remedy these issues, configure your computer to playback sound using the internal sound card by default.

To view/edit Window's default audio output setting:

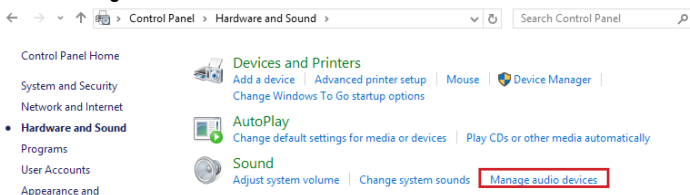
1. Go to Window's **Start Menu** and select **Control Panel**.



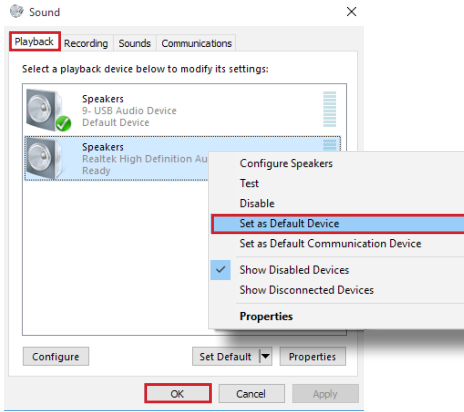
2. Set the view to **Category** if it isn't already then click on **Hardware and Sound**.



3. Click on **Manage Audio Devices**.

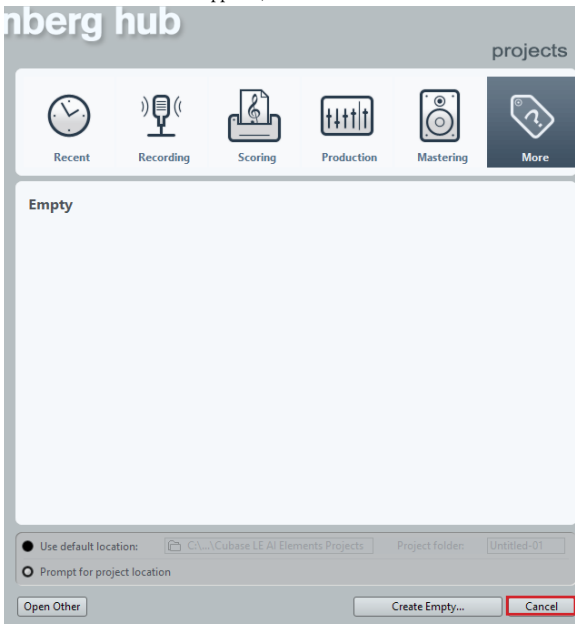


- Under the **Playback** tab, right click on your computer's sound card and select **Set as Default Device**. Click **OK** to close the window.

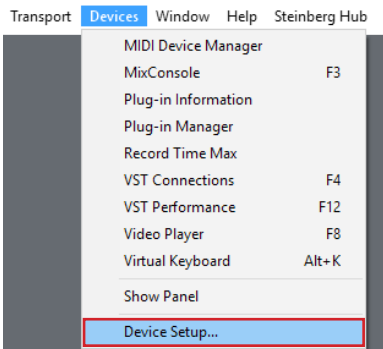


E. USING CUBASE LE WITH THE ALPHA/LAMBDA

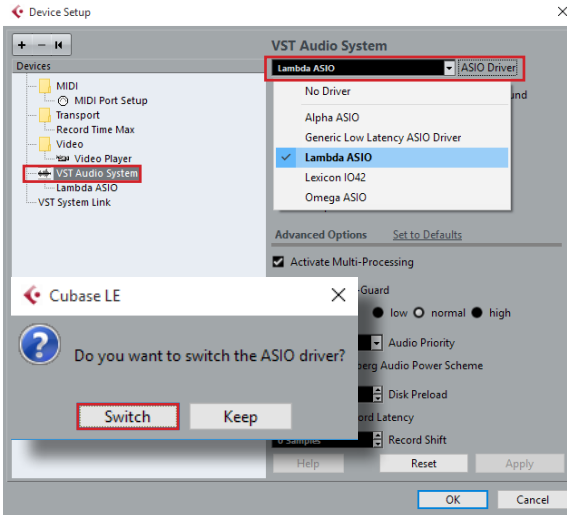
- Launch the **Cubase LE** application.
- When the default window appears, click the **Cancel** button to close the window.



3. Select Devices>Device Setup.

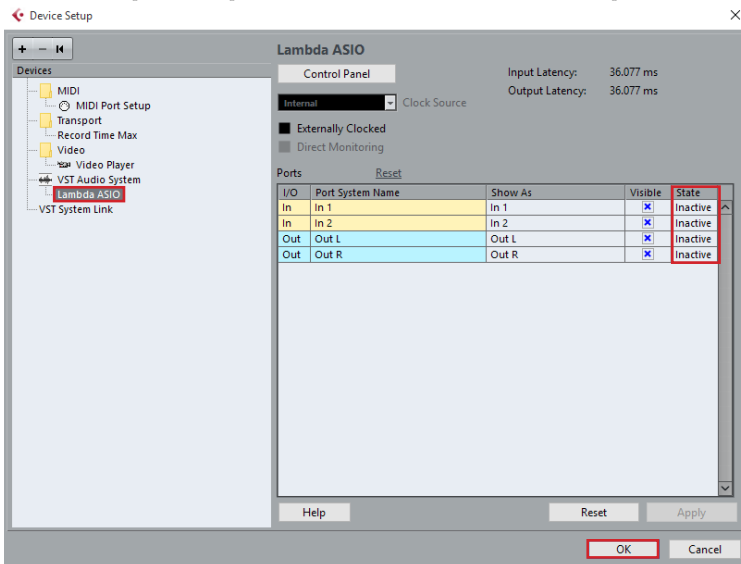


4. Under Devices, select VST Audio System then select your Lexicon audio interface from the ASIO Driver drop down list (Alpha ASIO or Lambda ASIO). When the confirmation prompt appears, click the Switch button.

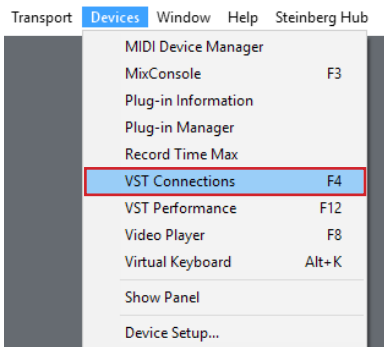


- The Lexicon audio interface's inputs and outputs must be active in Cubase LE in order to be available for assignment within the software. Typically, the inputs and outputs will automatically be made active for you. The exception is when Cubase LE has been launched without the Lexicon audio interface connected to the computer.

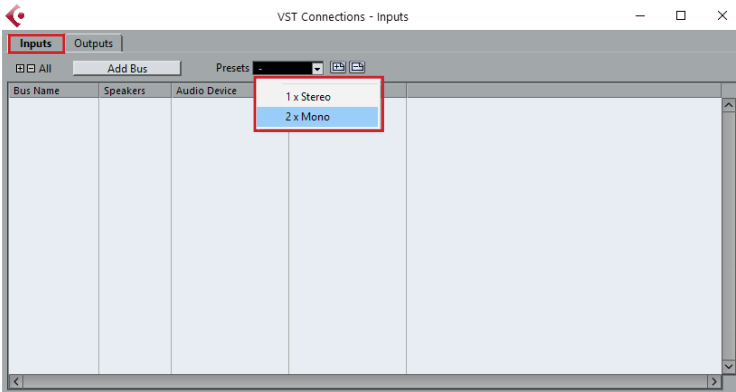
To confirm the inputs and outputs are active, click on the Lexicon audio driver under **Devices** and verify all inputs and outputs are in the 'Active' state (displayed on the right-hand side of the Device Setup window). If they are active, go to step 13. If they are 'Inactive' (as shown below), proceed to the next step to activate the inputs and outputs. Click the **OK** button to close the Device Setup window.



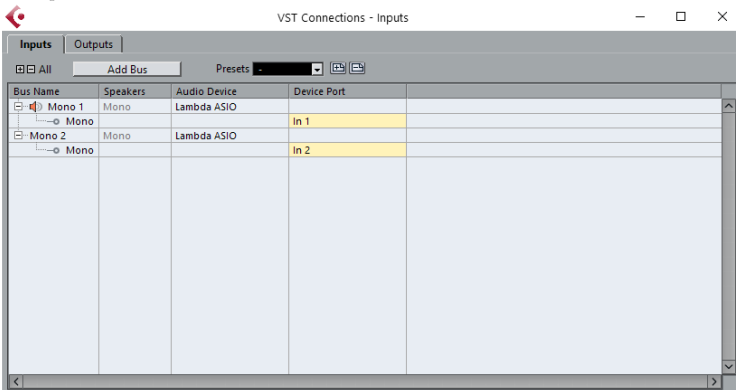
- Go to **Devices>VST Connections**.



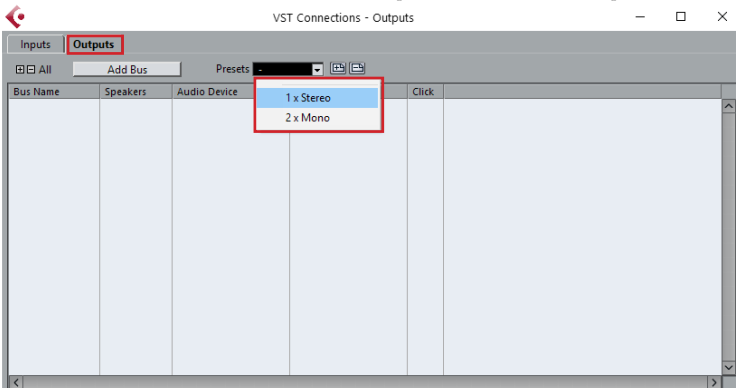
7. With the **Inputs** tab selected, select the **2 x Mono** option from the **Presets** drop down list.



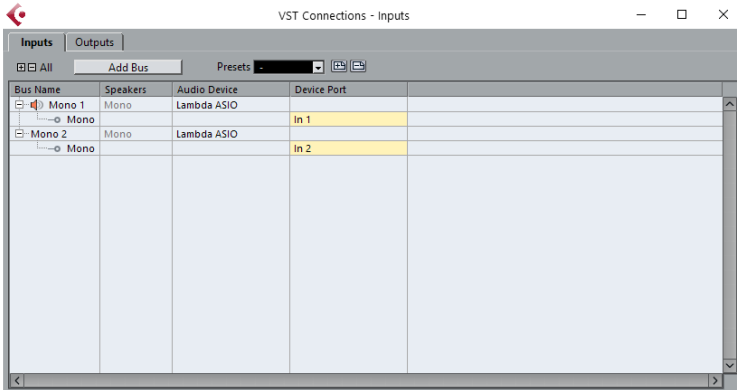
8. The inputs are now active.



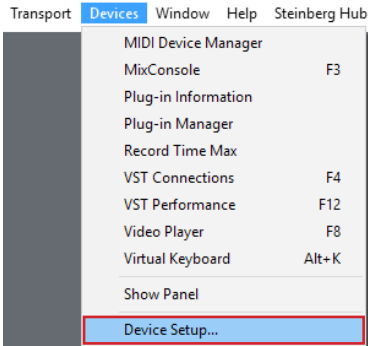
9. Click the **Outputs** tab then select the **1 x Stereo** option from the **Presets** drop down list.



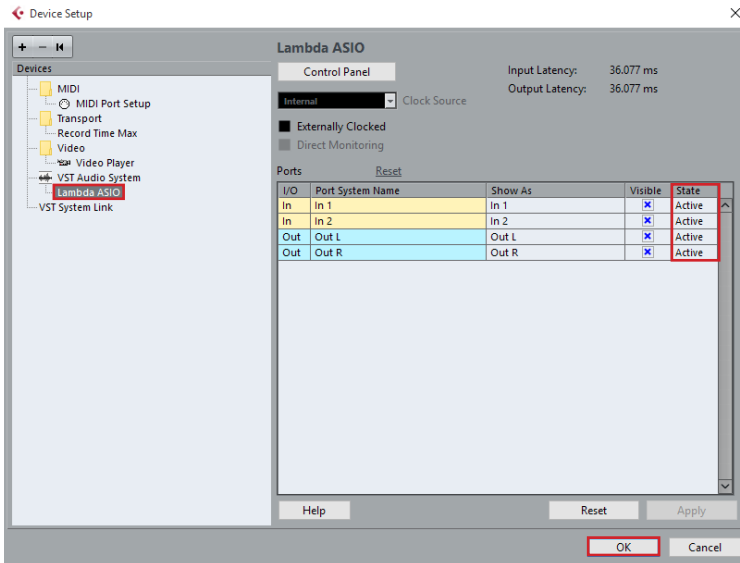
10. The outputs are now active. Close the window.



11. Go back to **Devices>Device Setup**.



12. Click on the Lexicon audio driver under **Devices** and verify all inputs and outputs now say 'Active' in the right-hand side of the Device Setup window. Click the **OK** button to close the Device Setup window.



13. You are now ready to begin recording using your Lexicon audio interface and Cubase LE. For information on recording with Cubase LE and using the audio interface, please refer to the owner's manual for your Lexicon audio interface.

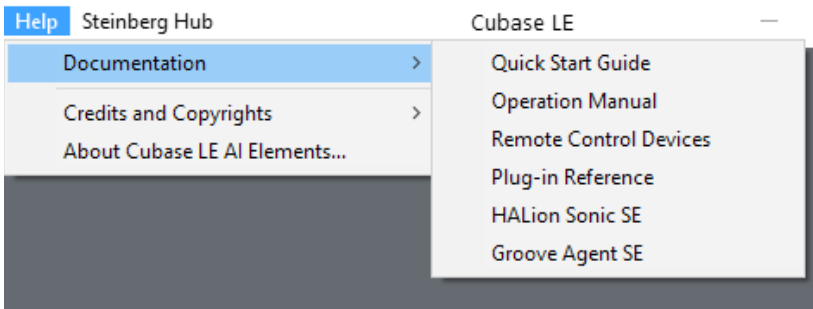
Alpha Owner's Manual

<http://lexiconpro.com/en-US/products/alpha#documentation>

Lambda Owner's Manual

<http://lexiconpro.com/en-US/products/lambda#documentation>

For more information on using Cubase LE, refer to the documentation available in the Cubase LE Help menu.



MAC® INSTALLATION

A. CONNECTING TO THE LEXICON ALPHA/LAMBDA

The Alpha and Lambda are designed to interface directly with a Mac computer via USB using OS X's CoreAudio driver. This means no separate driver installation is needed as long as your Mac OS software is 10.4 or higher. Note that although the Alpha/Lambda are compatible with OS X 10.4, your recording software, including Cubase LE, may require a higher version of OS X for proper operation.

To connect the Lexicon Alpha/Lambda to your Mac computer:

1. Connect the Alpha/Lambda to the computer's **USB** port.
2. The **USB** LED should now light solid blue on the Alpha/Lambda, indicating a USB connection has been established with the computer.

B. DOWNLOADING, INSTALLING, & ACTIVATING CUBASE® LE

1. Go to https://www.steinberg.net/en/mysteinberg/my_products.html and create or log into your MySteinberg account.
2. Go to the **Enter Download Access Code** area and enter the Cubase LE download code provided with the Alpha/Lambda to register and download Cubase LE. You will receive an activation code after registering that will be used to activate Cubase LE on your computer. Copy the activation code.
3. Once the download is complete, close any running software programs.
4. Go into the downloaded folder and launch the **Start Center** application. Follow the on-screen instructions to install Cubase LE. Once complete, restart the computer if prompted.
5. With the Lexicon audio interface still connected to the computer, launch Cubase LE. A prompt will appear asking you to activate the software. Click the **Activation** button then paste the activation code copied from step 2 to activate the software.

C. DOWNLOADING & INSTALLING THE LEXICON MPX-I PLUG-IN

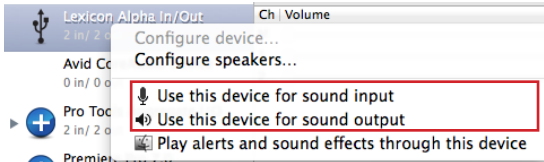
1. To download the Lexicon MPX-i reverb plug-in, follow the instructions provided on the license card included with the Alpha/Lambda.
2. Once the download is complete, close any running software programs.
3. Launch the Lexicon MPX-i reverb installer and follow the on-screen instructions. When prompted, enter the license code provided with the Alpha/Lambda.
4. Once complete, restart the computer if prompted and wait for the computer to reboot.
5. The Lexicon MPX-i reverb plug-in is now installed and available for use.

D. CONFIGURING MAC AUDIO SETTINGS (OPTIONAL)

When using the Alpha/Lambda with Cubase LE, it's recommended that you set the audio interface as the default audio device under MAC OS **Utility > Audio MIDI Setup**.

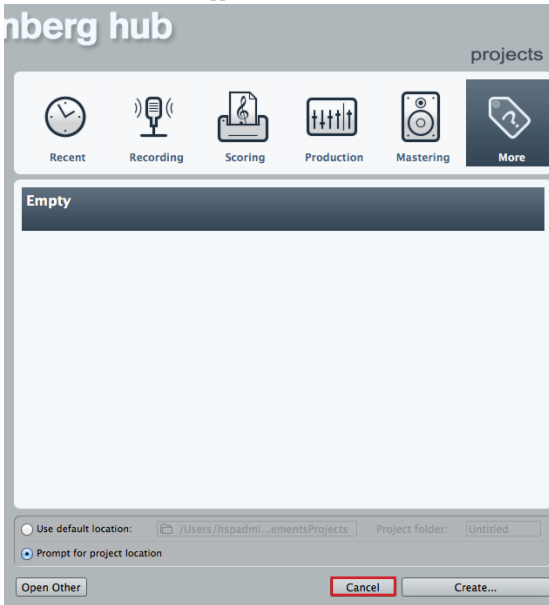
To edit OS X's default audio output setting:

1. Go to the main Mac OS **Applications** folder and open the **Utilities** folder.
2. Launch the **Audio MIDI Setup** utility application.
3. In the Audio Devices window, right-click on **Lexicon Alpha** (or **Lambda**) **In/Out** and select to use the Lexicon interface for 'sound input' and 'sound output'.

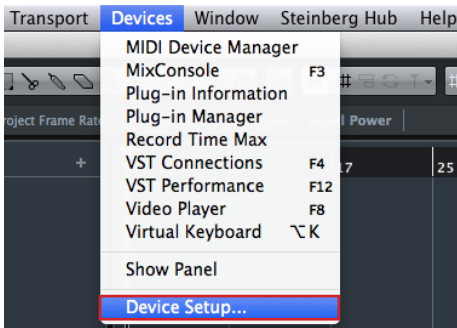


E. USING CUBASE LE WITH THE ALPHA/LAMBDA

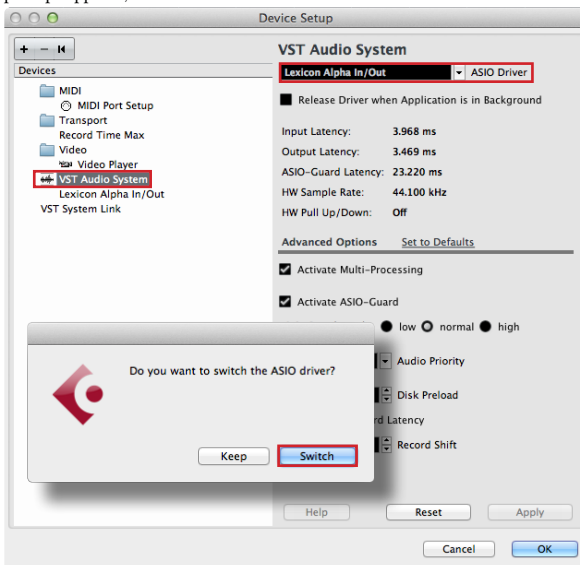
1. Launch the **Cubase LE** application.
2. When the default window appears, click the **Cancel** button to close the window.



3. Select **Devices>Device Setup**.

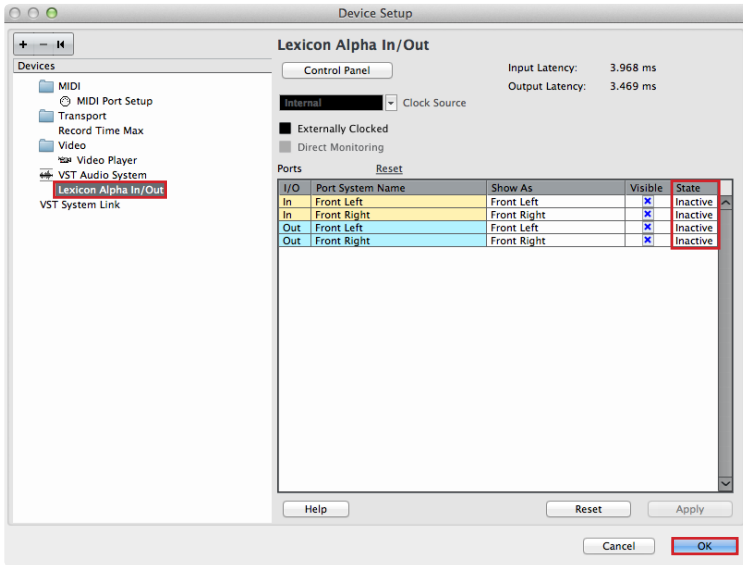


4. Under **Devices**, select **VST Audio System** then select your Lexicon audio interface from the ASIO Driver drop down list (**Lexicon Alpha In/Out** or **Lexicon Lambda In/Out**). When the confirmation prompt appears, click the **Switch** button.

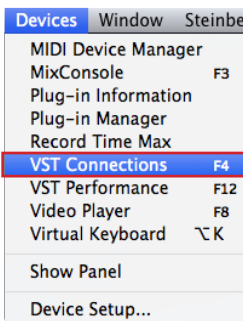


- The Lexicon audio interface's inputs and outputs must be active in Cubase LE in order to be available for assignment within the software. Typically, the inputs and outputs will automatically be made active for you. The exception is when Cubase LE has been launched without the Lexicon audio interface connected to the computer.

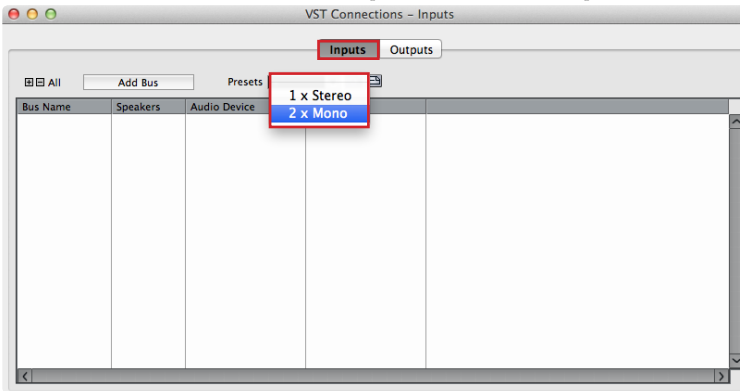
To confirm the inputs and outputs are active, click on the Lexicon audio driver under **Devices** and verify all inputs and outputs are in the 'Active' state (displayed on the right-hand side of the Device Setup window). If they are active, go to step 13. If they are 'Inactive' (as shown below), proceed to the next step to activate the inputs and outputs. Click the **OK** button to close the Device Setup window.



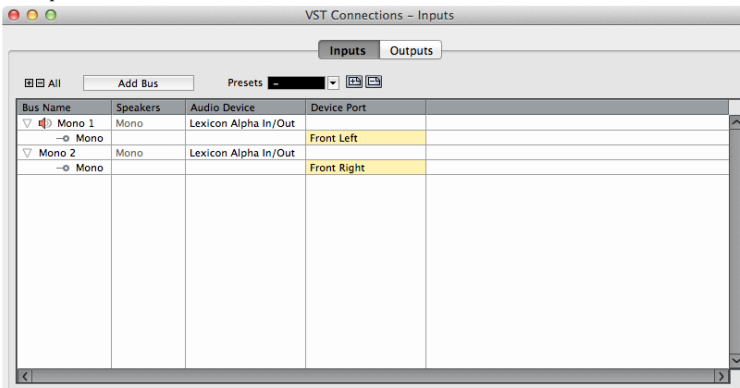
- Go to **Devices>VST Connections**.



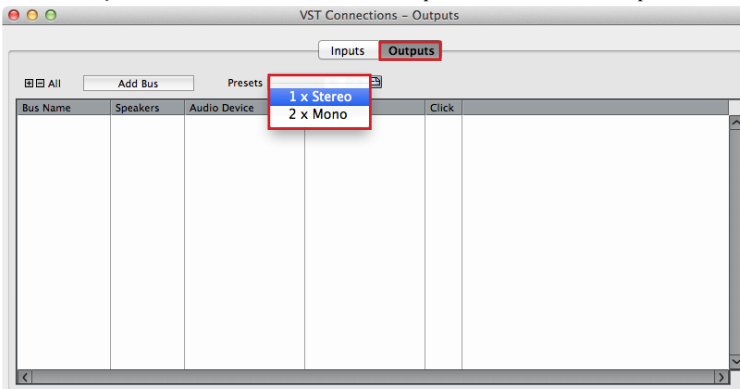
7. With the **Inputs** selected, select the **2 x Mono** option from the **Presets** drop down list.



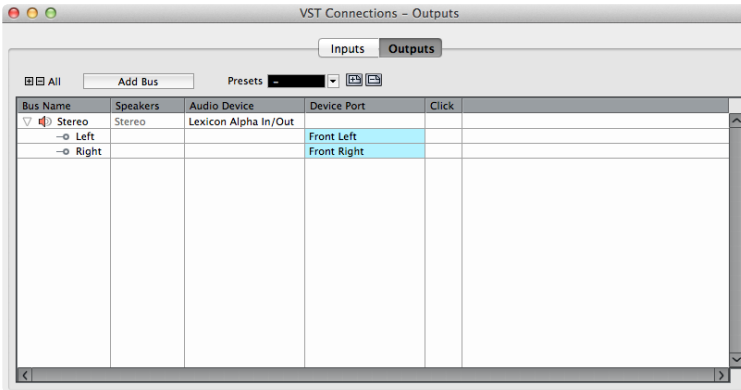
8. The inputs are now active.



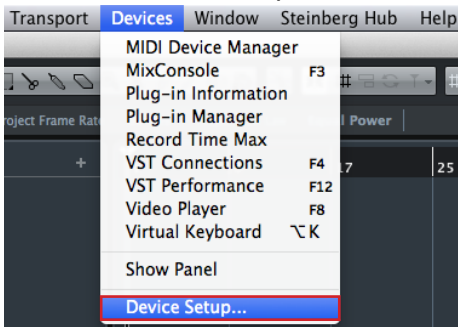
9. Click the **Outputs** button then select the **1 x Stereo** option from the **Presets** drop down list.



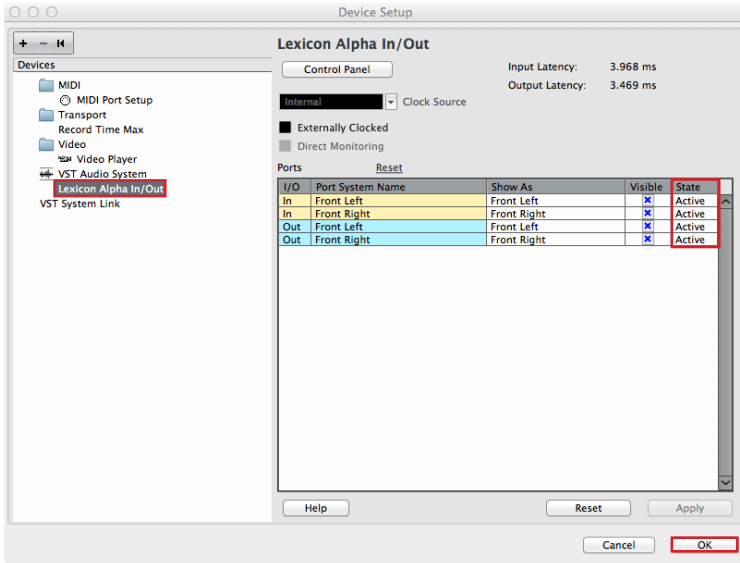
10. The outputs are now active. Close the window.



11. Go back to **Devices>Device Setup**.



12. Click on the Lexicon audio driver under **Devices** and verify all inputs and outputs now say 'Active' in the right-hand side of the Device Setup window. Click the **OK** button to close the Device Setup window.



13. You are now ready to begin recording using your Lexicon audio interface and Cubase LE. For information on recording with Cubase LE and using the audio interface, please refer to the owner's manual for your Lexicon audio interface.

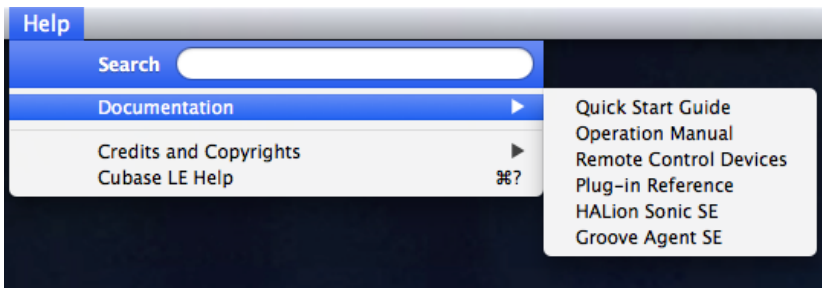
Alpha Owner's Manual

<http://lexiconpro.com/en-US/products/alpha#documentation>

Lambda Owner's Manual

<http://lexiconpro.com/en-US/products/lambda#documentation>

For more information on using Cubase LE, refer to the documentation available in the Cubase LE Help menu.





PHONE: (801) 566-8800

WEB: lexiconpro.com

SUPPORT: lexiconpro.com/en-US/support

Alpha/Lambda Studio Software Installation Guide

PN: 5074674-A

© 2016 Harman.

All rights reserved.

Lexicon is a registered trademark of Harman.

